

Installation Instructions

5704067 (19207)

Governor and Air Cleaner Kit

FSN 2910-017-5101

Truck, Cargo, 1-1/4 TON, 4x4, M715

Truck, Ambulance, 1-1/4 TON, 4x4, M725

1. Kit Contents

	Item & Name Part No.	Qty Req'd	Wgt	Dim	Cu	Fig No.	Item No.
2910-017-5101	Kit, governor & air cleaner, 5704067 (19207) composed of:	1	34	40x12x13			
	Bracket, throttle return spring 11657077 (19207)	1				1	1
	Clamp, hose, vent 11640805-3 (19207)	8				1	7
	Hose, governor vent 11657469-4 (19207)	1				1	8
	Gasket, carburetor and governor 11640784 (19207)	3				1	9
	Spacer, carburetor 11657634 (19207)	1				1	10
2910-135-6534	Governor assembly 11640981 (19207)	1				1	11
2910-119-0858	Bracket, accelerator 11657083 (19207)	1				1	12
	Stud, governor and carburetor mounting 11656957 (19207)	2				1	13
	Tube Assy, fuel 11657840 (19207)	1				1	14
	Hose, master cylin- der to tee 11657469-1 (19207)	1				1	15
	Hose, fuel pump vent to master cylinder 11657469-7 (19207)	1				1	16
4730-139-3904	Tee, master cylinder vent 11640795 (19207)	1				1	17

Item & Name Part No.	Qty Req'd	Wgt	Dim	Cu	Fig No.	Item No.
Hose, master cylinder tee to air cleaner 11657469-6 (19207)	1				1	18
4730-908-6292 Clamp, air cleaner hose, MS35842-14 (96906)	2				1	19
2940-135-6533 Hose, flexible, air cleaner to air horn 11641011 (19207)	1				1	20
Hose assy, crank-case vent breather to carburetor air horn 11657458 (19207)	1				1	22
Clamp, breather hose to air horn 274341 (24617)	1				1	23
Tube assembly, air horn tee 11657455 (19207)	2				1	24
4730-249-8278 Tee, distributor and governor vent 143482 (24617)	1				1	26
Air horn, carburetor 11657690 (19207)	1				1	27
2940-928-6134 Gasket, air horn to carburetor 11640776 (19207)	1				1	28
Clamp assembly, air horn 11640880 (19207)	1				1	29
5310-241-6658 Nut, self-locking, air cleaner bracket MS51943-34 (96906)	10				2	1
Bolt, "U" air cleaner bracket 11657359 (19207)	5				2	2
Crossmember assembly air cleaner 11657596 (19207)	1				2	3

	Item & Name Part No.	Qty Req'd	Wgt	Dim	Cu	Fig No.	Item No.
	Hose, air cleaner to fuel tank vent 11657394-4 (19207)	1				2	16
4730-131-4951	Clamp, fuel tank vent hose 11640805-2 (19207)	2				2	17
2940-135-6532	Air cleaner assy, complete 11640725 (19207)	1				2	18
	Strap, air cleaner mounting, front 11657663-1 (19207)	1				2	19
	Clip, front saddle bracket 11657598-2 (19207)	1				2	20
	Bracket, saddle air cleaner front 11657594 (19207)	1				2	21
5310-061-4650	Nut, self-locking, upper & lower support MS51943-31 (96906)	3				2	22
	Support, lower, air cleaner 11657590 (19207)	1				2	23
	Support, upper, air cleaner 11657595 (19207)	1				2	24
4010-158-2136	Pin and lanyard assembly 11640785 (19207)	1				2	25
5307-018-7527	Screw, assembled washer, air cleaner mounting tube 187527 (24617)	2				2	26
	Brace, air cleaner mounting 11657221 (19207)	1				2	27

	Item & Name Part No.	Qty Req'd	Wgt	Dim	Cu	Fig No.	Item No.
	Bolt, shoulder, upper and lower support 11657687 (19207)	3				2	4
5306-637-9721	Bolt, hinge bracket to crossmember 123480 (24617)	2				2	5
	Crossmember, air cleaner support, rear 11657600 (19207)	1				2	6
	Bracket, hinge 11657592 (19207)	1				2	7
5310-241-6658	Nut, self-locking, hinge bracket MS51943-34 (96906)	2				2	8
	Bracket, saddle 11657597 (19207)	1				2	9
	Bolt, shoulder, saddle bracket 11657687 (19207)	2				2	10
5310-061-4650	Nut, self-locking, saddle bracket MS51943-31 (96906)	2				2	11
	Clip, rear saddle bracket 11657598-1 (19207)	1				2	12
	Strap, air cleaner mounting, rear 11657663 (19207)	1				2	13
5305-958-9990	Screw, machine, strap MS35207-295 (96906)	2				2	14
5310-241-6658	Nut, self-locking, strap MS51943-34 (96906)	2				2	15

	Item & Name Part No.	Qty Req'd	Wgt	Dim	Cu	Fig No.	Item No.
5340-720-6213	Clamp, loop, hose MS21333-59 (96906)	1				2	29
	<u>Non-Illustrated Items:</u>						
	Bracket, horn 11657654 (19207)	1					
2590-152-2490	Cable extension, temperature sending unit 11657889 (19207)	1					
	Installation Instruc- tions 5704067 (19207)	1					

2. Removal and Installation Instructions

a. Removal.

- (1) Disconnect fuel pump vent hose at air cleaner.
- (2) Remove transfer and transmission vent hose from crankcase breather tube. Retain hose and clamp.
- (3) Remove master cylinder vent hose and discard.
- (4) Remove crankcase to air cleaner breather and discard. Retain clamp.
- (5) Loosen air cleaner clamp screw and remove and discard air cleaner assembly. Retain rain deflector cap.
- (6) Disconnect ignitor vent hose at air cleaner.
- (7) Remove throttle control return spring.
- (8) Remove screw and lockwasher and clip remove throttle control bracket from intake manifold. Discard bracket.
- (9) Remove and discard fuel inlet tube from carburetor to fuel filter hose.

(10) Remove and retain the two hex nuts, lockwashers and flatwashers securing carburetor. Remove carburetor with choke cable attached and position out of way until reinstallation. Cover opening in manifold.

(11) Remove and discard two carburetor mounting studs from intake manifold.

(12) Disconnect horn wire, remove two screws and remove horn and bracket.

(13) Remove two nuts and screws and remove horn from bracket. Discard bracket.

(14) Disconnect cable assembly from wiring harness at temperature sending unit.

(15) Clean all gasket surfaces.

b. Installation.

(1) Installation of Governor and Carburetor (Fig. 3)

(a) Install two studs (13, Fig. 1) in intake manifold. Stud height after installation to be 3-1/2 inches.

(b) Install gasket (9), governor (11), tasket (9), spacer (10), and other gasket (9).

(c) Install carburetor assembly (3) with two flat washers (6), lock washers (5), and hex nuts (4)

(d) Install throttle control bracket (12) to intake manifold using previously removed hardware.

(e) Connect throttle control cable to carburetor.

(f) Install throttle return spring bracket (1) on rear valve cover stud torque to 5 to 8 lbs ft. Connect throttle control return spring (2).

(g) Install fuel inlet tube (14) to carburetor and connect to fuel filter hose.

(h) Install vent tee (26) into air horn and install two tube assemblies (24) to tee.

(i) Install gasket (28) and carburetor air horn (27) to carburetor with "V" clamp (29).

(2) Installation of Air Cleaner Assembly (Fig. 4 & 5)

(a) Install air cleaner support brace (27 Fig. 2) to rear hood guide bracket with screw (26) and attach brace to left hand hood brace with "U" bolt (2) and two lock nuts (1).

(b) Attach front strap (19) and clip (20) and rear strap (13) clip (12) to air cleaner assembly with two screws (14) and two lock nuts (15). Do not tighten.

(c) Attach upper (24) and lower (23) supports and saddle bracket (21) to front bracket (3) with three bolts (4) and three lock nuts (22)

(d) Attach rear air cleaner hinge bracket (7) to rear support bracket (6) with two screws (5) and two lock nuts (8).

(e) Attach rear saddle bracket (9) to hinge bracket with two screws (10) and lock nuts (11).

(f) Install air cleaner front mounting bracket assembly (3) between hood braces with two "U" bolts (2) and four lock nuts (1). Attach pin and lanyard assembly (25) to "U" bolt.

(g) Install air cleaner rear support bracket (6) between hood braces and attach with two "U" bolts (2) and four lock nuts (1). Push air cleaner up into place and insert pin.

(3) Installation of Vent Lines (Fig. 6)

(a) Install hose (20, Fig. 1) from rear of air cleaner to carburetor air horn with two clamps (19).

(b) Install crankcase breather hose (22) to crankcase using clamp previously removed (21). Attach breather tube to air horn with clamp (23).

(c) Connect transfer and transmission vent hose to crankcase breather vent tube.

(d) Connect ignitor vent hose (25) to tube assembly (24) with hose clamps (7).

(e) Install governor vent hose (8) to tube assy (24) with two hose clamps (7).

(f) Install hose (15) clamps (7) and tee (17) at master cylinder.

(g) Install fuel pump vent hose (16) and two clamps (7) to tee at master cylinder.

(h) Install vent hose (18, Fig. 1) from master cylinder tee to air cleaner with two clamps (7).

(i) Install fuel tank vent hose (16, Fig. 2) from vent line to air cleaner with two clamps (17).

(j) Remove left hand nut (1) from left hand "U" bolt (2). Install loop clamp (29) over hose (16) and install on "U" bolt.

(4) Installation of horn.

(a) Attach vehicle horn to new mounting bracket using previously removed hardware and connect horn lead to horn.

(b) Install horn and bracket on fender well and secure with previously removed hardware.

(c) Install cable extension assembly from wiring harness (circuit 33) to temperature sending unit.

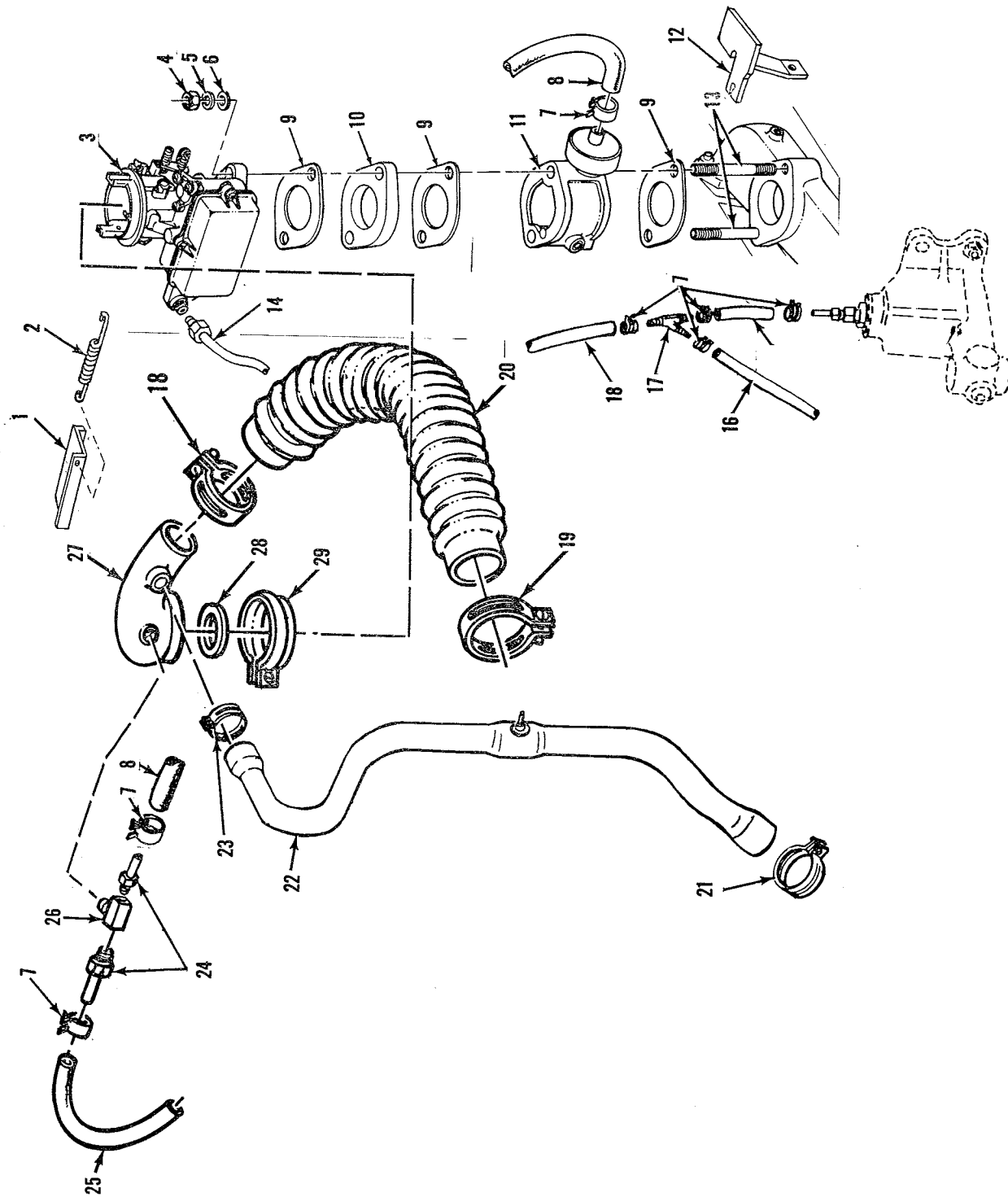
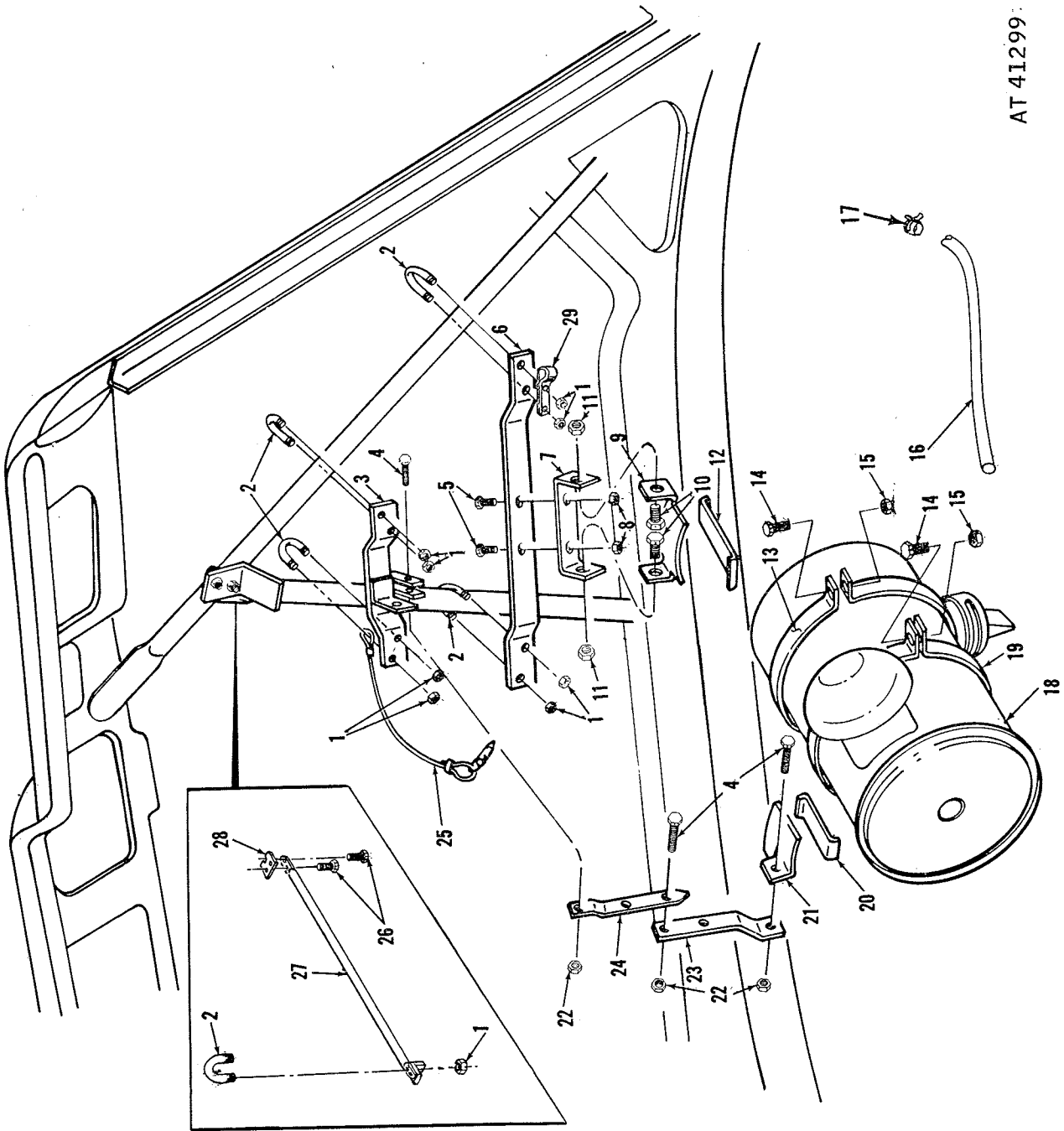


FIGURE 1. CARBURETOR, GOVERNOR AND ASSOCIATED PARTS.



AT 41299

FIGURE 2. AIR CLEANER AND ASSOCIATED PARTS.

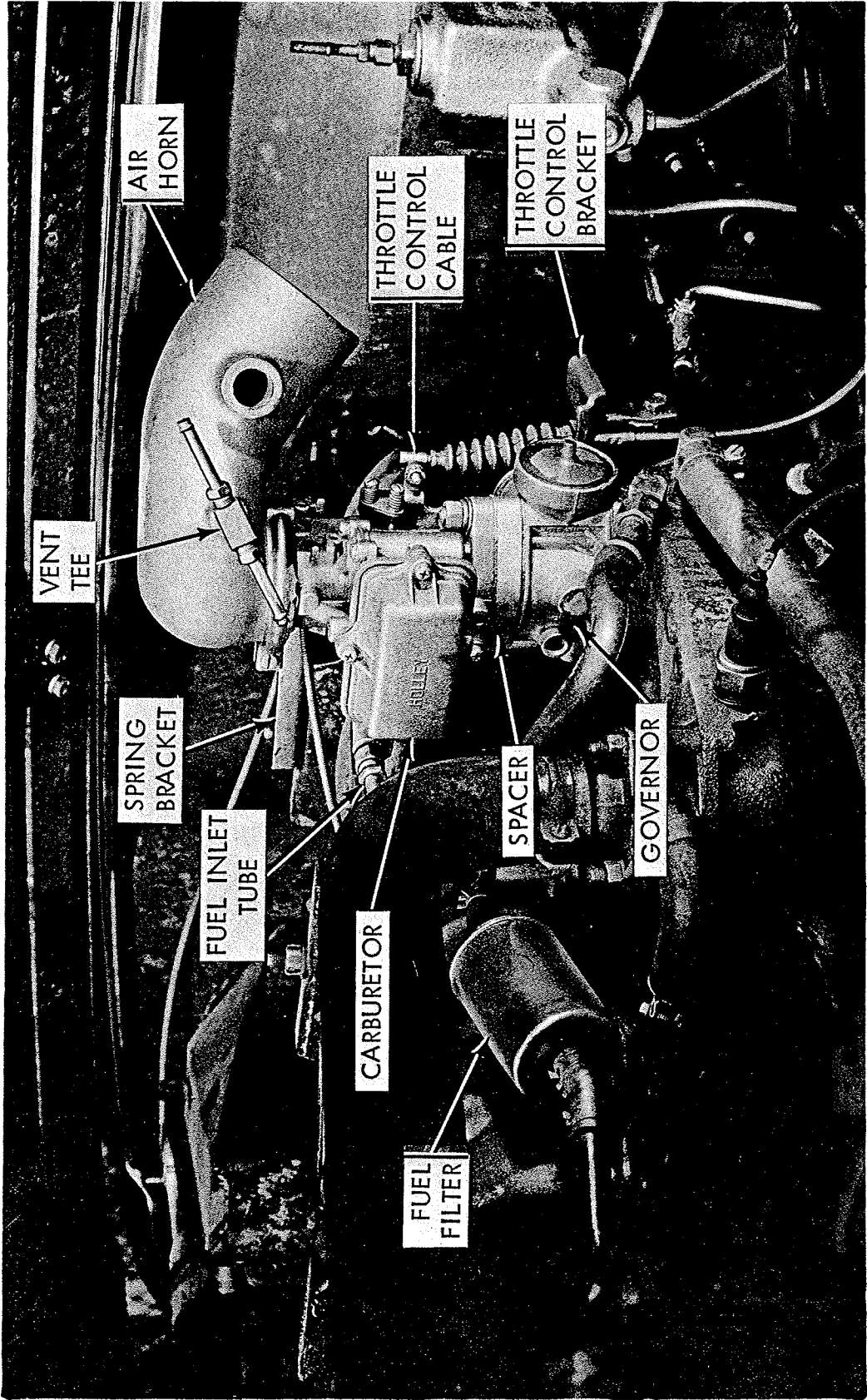


FIGURE 3. GOVERNOR INSTALLATION

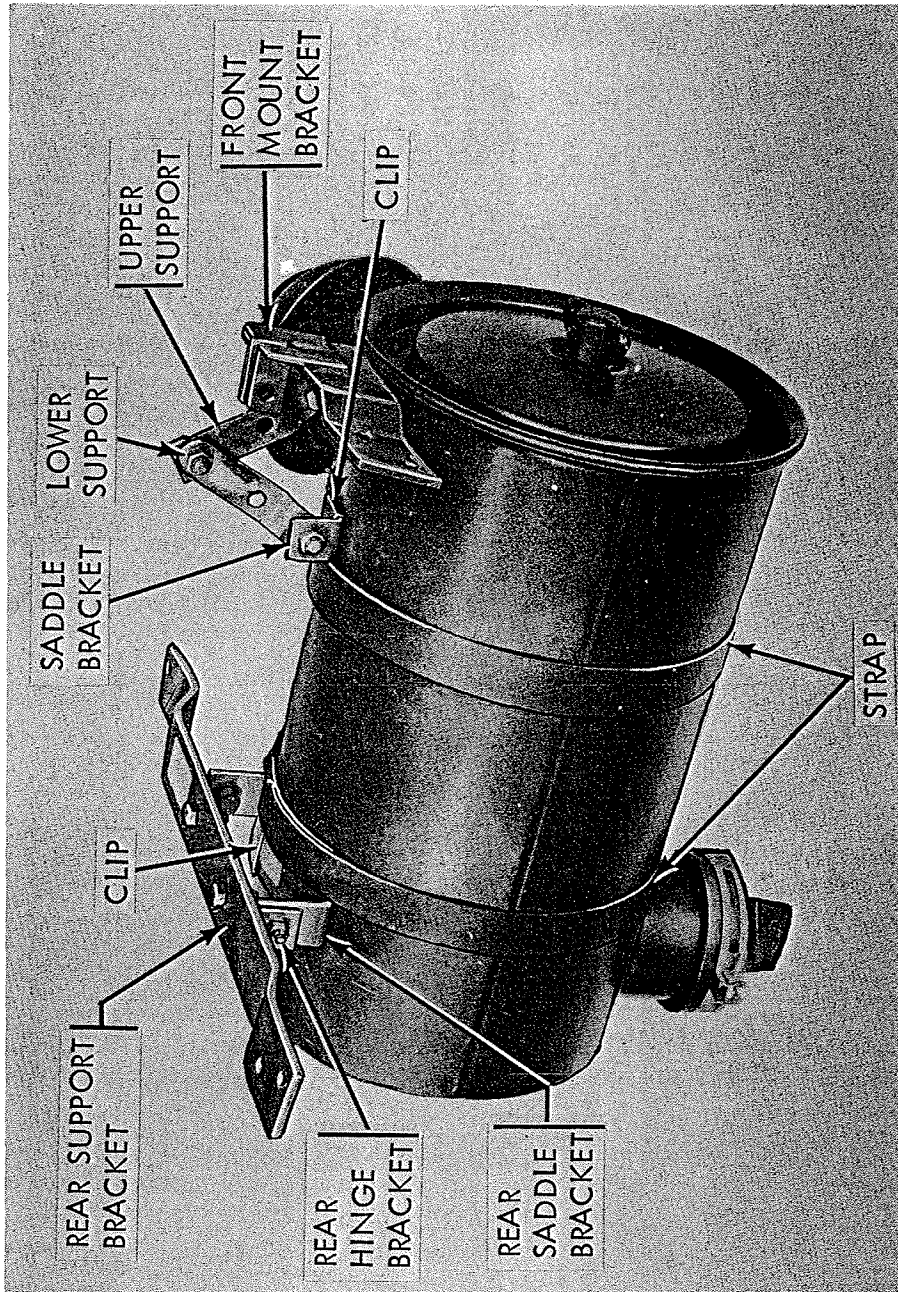


FIGURE 4. AIR CLEANER MOUNTING BRACKETS

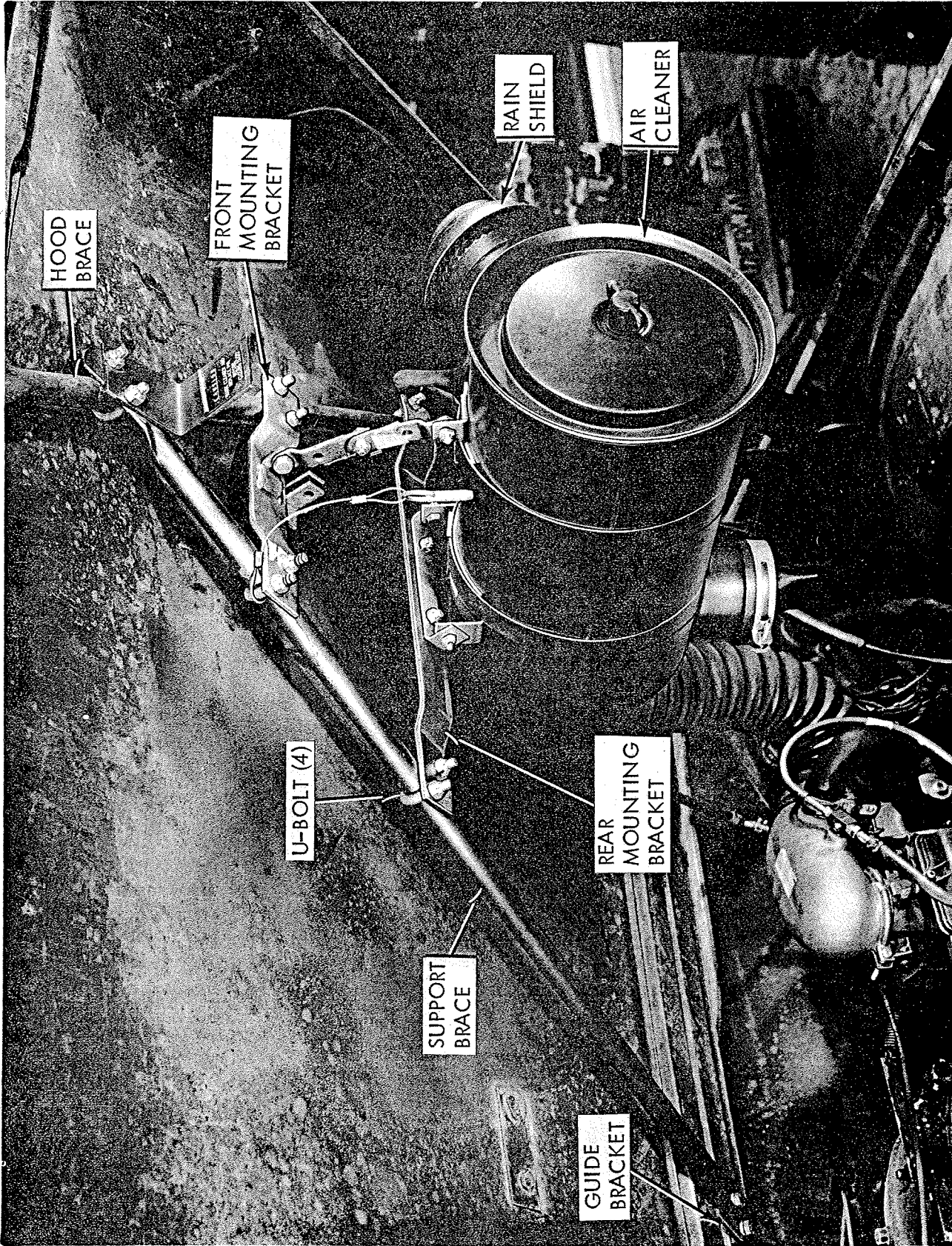


FIGURE 5. AIR CLEANER INSTALLATION

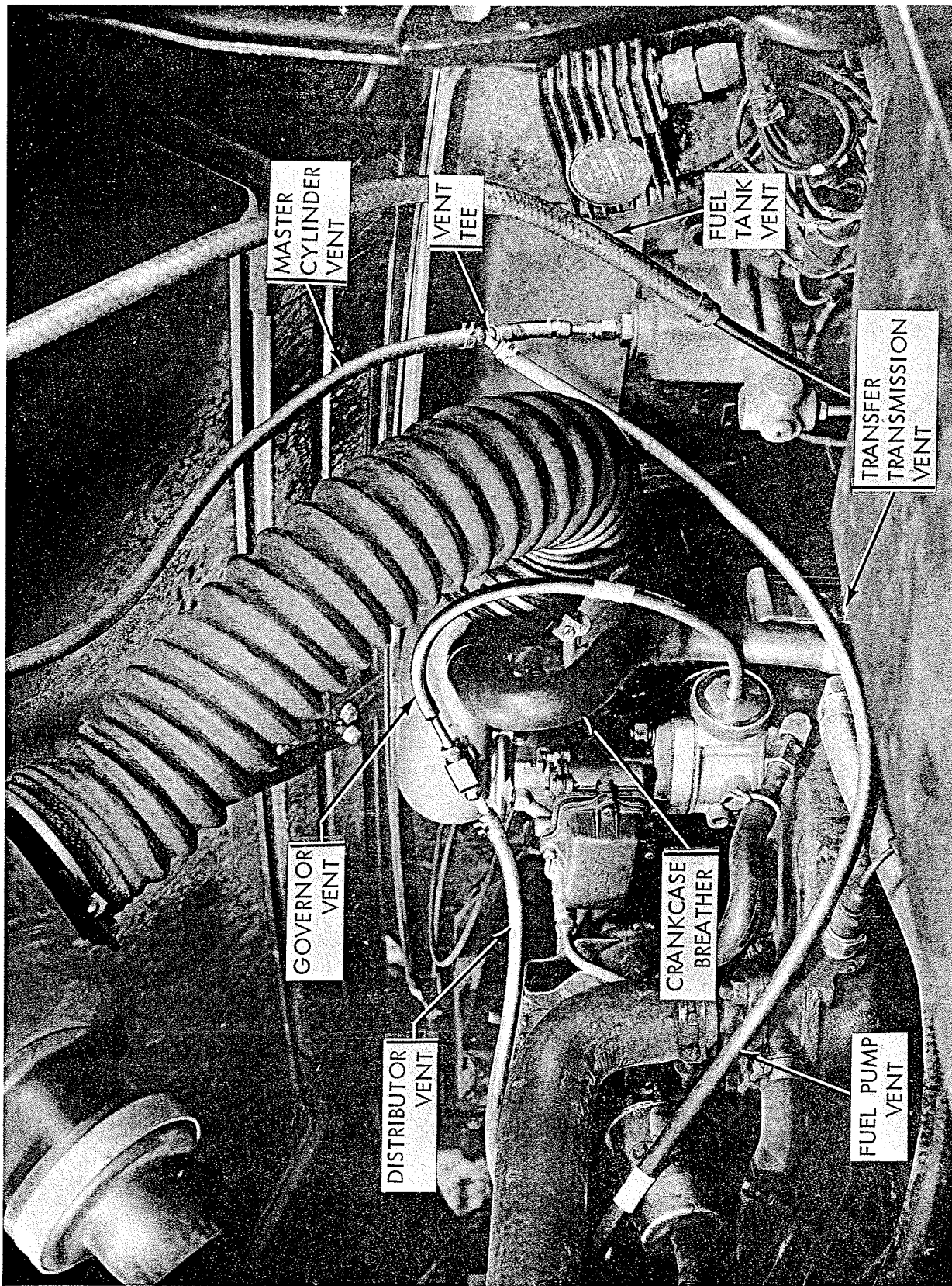


FIGURE 6. VENT LINES INSTALLATION

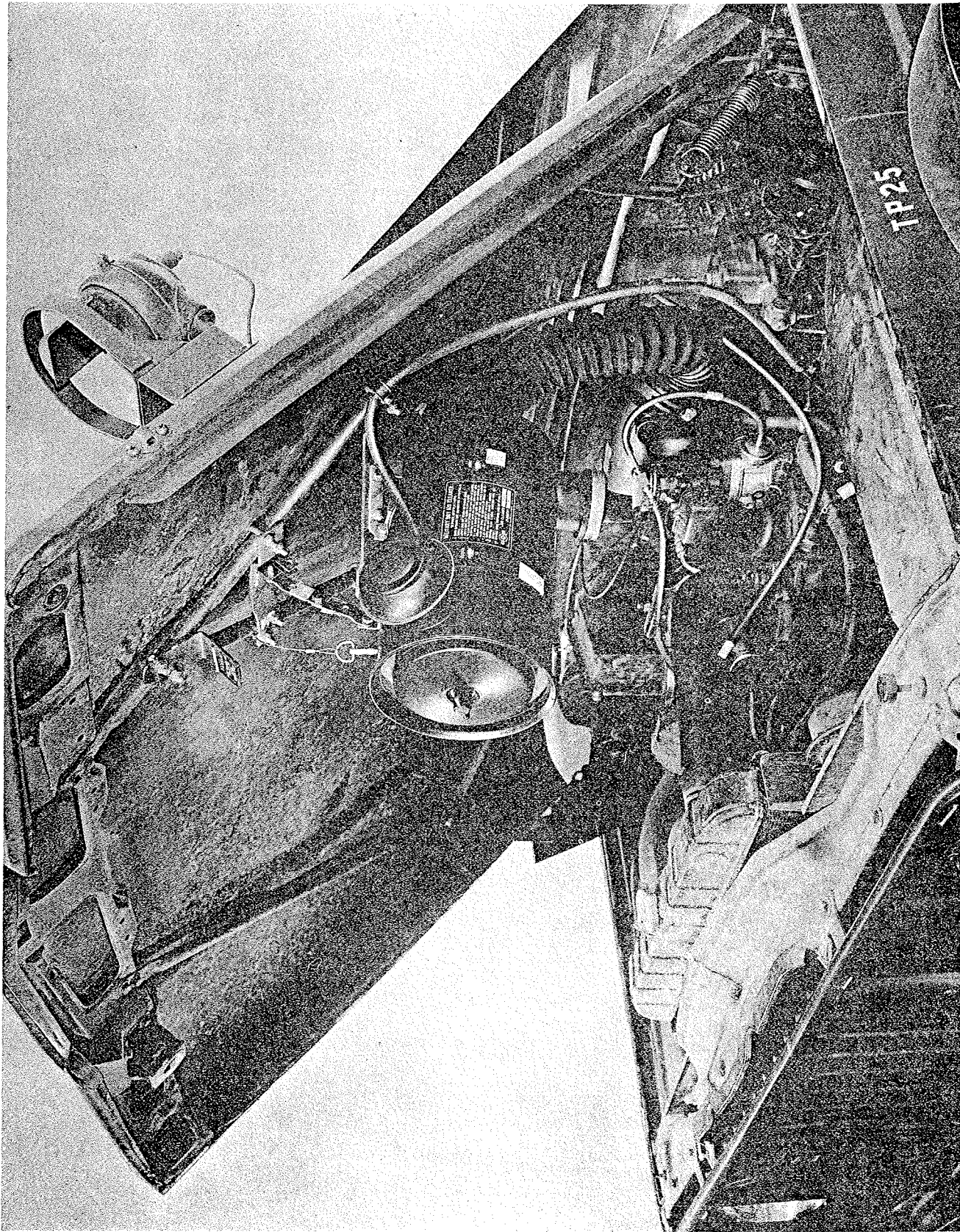


FIGURE 7. AIR CLEANER & GOVERNOR INSTALLED